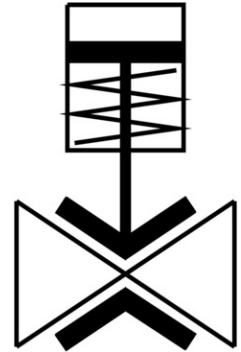


# Pinch valve VZQA-C-M22U-25-GG-ALALE-4

Part number: 3968923

FESTO



## Data sheet

Feature	Value
Type code	VZQA
Structural design	Pinch valve, pneumatically operated
Actuation type	Pneumatic
Sealing principle	Soft
Mounting position	Any
Type of mounting	Line installation
Fitting connection	G1
Nominal width DN	25
Valve function	2/2, open, monostable
Flow direction	Reversible
Medium pressure	0 MPa ... 0.4 MPa
Medium pressure	0 bar ... 4 bar
Medium pressure	0 psi ... 58 psi
Operating pressure	0.1 MPa ... 0.65 MPa
Operating pressure	1 bar ... 6.5 bar
Operating pressure	14.5 psi ... 94.25 psi
Nominal pressure of fitting PN	10
Differential pressure	0.25 MPa
Differential pressure	2.5 bar
Differential pressure	36.25 psi
Burst pressure	1.6 MPa
Burst pressure	16 bar
Burst pressure	232 psi
Overload pressure	0.78 MPa
Overload pressure	7.8 bar
Overload pressure	113.1 psi
Reset method	Rebound resilience
Type of control	Externally controlled
Auxiliary pilot air port 12	G1/8
Pilot medium	Compressed air as per ISO 8573-1:2010 [7:4:1]

Feature	Value
Symbol	00995245
Medium	Compressed air as per ISO 8573-1:2010 [:-:1] Water
Max. viscosity	4000 mm <sup>2</sup> /s
Temperature of medium	-5 °C ... 100 °C
Ambient temperature	-5 °C ... 60 °C
Storage temperature	6 °C ... 8 °C
Flow rate Kv	18 m <sup>3</sup> /h
On switching time	250 ms
Switching time off	250 ms
Note on materials	Contains paint-wetting impairment substances RoHS-compliant
Housing material	Wrought aluminum alloy
Housing cover material	Wrought aluminum alloy
Seals material	FPM
Shut-off element material	EPDM
Product weight	480 g
For use in the food industry	See supplementary material information
Material of bowl	PA6